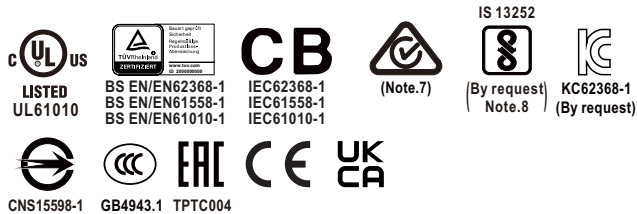




User's Manual



## Features

- 85~264Vac input range
- Global certificates in multi-fields (ITE 62368-1, Industrial 61558-1/-2-16, 61010)
- 30mm slim width
- High efficiency up to 91% and no load power dissipation <1W
- Built-in constant current limiting circuit
- Protections: Short circuit / Overload / Over voltage / Over temperature
- Fanless design, cooling by free air convection
- Over voltage category III (OVC III)
- -40~+70°C wide range operation temperature (>+50°C derating)
- Operating altitude up to 5000 meters
- Built-in DC OK relay contact
- Can be installed on DIN rail TS-35/7.5 or 15
- 3 years warranty

## Description

The XDR-75E series is a 75W AC/DC economical ultra slim industrial DIN rail power. Key features of this series include a narrow 30mm casing, optimizing system installation space, and an ultra-wide input range of 85~264Vac suitable for global use. It boasts a maximum efficiency of 91% and a low standby power consumption <1W for energy savings and carbon reduction. It has built-in constant current, fanless design, a wide operating temperature range of -40 to +70°C (up to +50°C at full load); OVCIII compliance; built-in DC OK signal. With comprehensive protection functions, complete safety certifications, and a 3-years warranty, the XDR-75E series is a compact, high-performance, and highly reliable DIN rail power supply.

## Model Encoding

**XDR - 75 E - 24**

- Output voltage(12V/24V/36V/48V)
- Economical version
- Output wattage
- Series name

## Applications

- Industrial control system
- Semiconductor fabrication equipment
- Factory automation
- Electro-mechanical apparatus
- Battery charger

## GTIN CODE

MW Search: <https://www.meanwell.com/serviceGTIN.aspx>

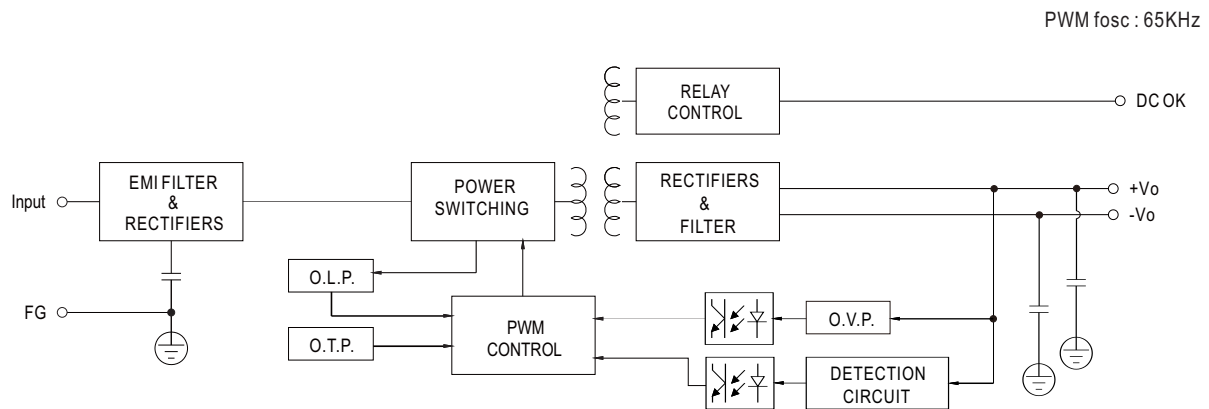


SPECIFICATION		XDR-75E-12		XDR-75E-24		XDR-75E-36		XDR-75E-48	
OUTPUT									
DC VOLTAGE		12V		24V		36V		48V	
RATED CURRENT		6.3A		3.2A		2.1A		1.6A	
CURRENT RANGE		0 ~ 6.3A		0 ~ 3.2A		0 ~ 2.1A		0 ~ 1.6A	
RATED POWER		75.6W		76.8W		75.6W		76.8W	
RIPPLE & NOISE (max.) <div>Note.2</div>		100mVp-p		100mVp-p		120mVp-p		120mVp-p	
VOLTAGE ADJ. RANGE		12 ~ 15V		24 ~ 29V		36 ~ 42V		48 ~ 55V	
VOLTAGE TOLERANCE <div>Note.3</div>		± 2.0%		± 1.0%		± 1.0%		± 1.0%	
LINE REGULATION		± 0.5%		± 0.5%		± 0.5%		± 0.5%	
LOAD REGULATION		± 1.0%		± 1.0%		± 1.0%		± 1.0%	
SETUP, RISE TIME		1200ms, 60ms/230Vac		2500ms, 60ms/115Vac at full load					
HOLD UP TIME (Typ.)		16ms/230Vac		10ms/115Vac at full load					
INPUT									
AC VOLTAGE RANGE		85 ~ 264Vac							
DC VOLTAGE RANGE		120 ~ 370Vdc							
NO LOAD POWER CONSUMPTION (Typ.)		0.5W @115Vac    0.7W @230Vac		0.8W @115Vac    0.9W @230Vac				0.8W @115Vac    1W @230Vac	
FREQUENCY RANGE		47 ~ 63Hz							
EFFICIENCY (Typ.)		89%		90%		91%		91%	
AC CURRENT (Typ.)		1.4A/115Vac    0.8A/230Vac							
INRUSH CURRENT (Typ.)		COLD START    18A/115Vac    35A/230Vac							
LEAKAGE CURRENT		<1mA / 240Vac							
PROTECTION									
OVERLOAD		105~130% rated output power, constant current limiting without shutdown, recovers automatically after fault condition is removed							
OVER VOLTAGE		15 ~ 18V		30 ~ 34V		43 ~ 50V		56 ~ 65V	
		Protection type : Shut down o/p voltage, re-power on to recover							
OVER TEMPERATURE		Protection type : Hiccup mode, recovers automatically after fault condition is removed							
FUNCTION									
DC OK RELAY CONTACT		Relay Contact Ratings (max.):30Vdc/1A, 30Vac/0.5A resistive load							
ENVIRONMENT									
WORKING TEMP.		-40 ~ +70°C (Refer to "Derating Curve")							
WORKING HUMIDITY		20 ~ 95% RH non-condensing							
STORAGE TEMP., HUMIDITY		-40 ~ +85°C, 10 ~ 95% RH non-condensing							
TEMP. COEFFICIENT		±0.03% /°C (0 ~ 50°C)							
VIBRATION		Component:10 ~ 500Hz, 2G 10min./1cycle, 60min. each along X, Y, Z axes; Mounting: Compliance to IEC60068-2-6							
SAFETY & EMC <div>Note.6&amp;7&amp;8</div>									
SAFETY STANDARDS		CB	IEC 62368-1, IEC 61558-1/2-16, IEC 61010-1/-2-201						
		TUV	BS EN/EN 62368-1, BS EN /EN 61558-1/-2-16, BS EN/EN 61010-1/-2-201						
		UL	UL/CUL 61010-1/-2-201						
		CCC	GB4943.1						
		BSMI	CNS15598-1						
		EAC	TPTC004 approved						
		KC/BIS	KC 62368-1 and BIS IS 13252 (Part 1) certified, no stock by request ,contact sales for inquiries						

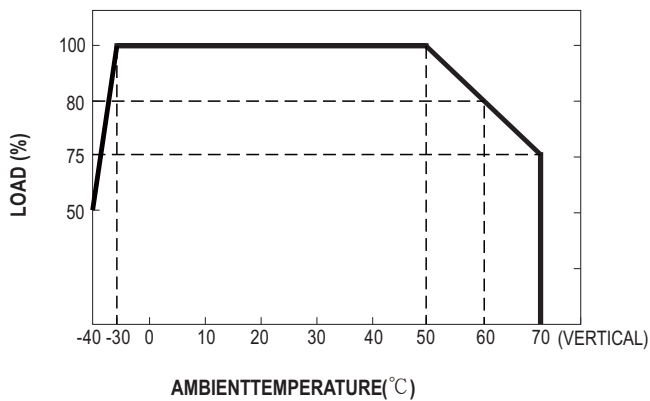


SPECIFICATION		XDR-75E-12	XDR-75E-24	XDR-75E-36	XDR-75E-48
SAFETY & EMC <span>Note.6&amp;7&amp;8</span>					
OVER VOLTAGE CATEGORY	Note.4	IEC/EN 61558-1/-2-16 (OVC III, altitude up to 2000m ) IEC/EN/UL 61010-1/-2-201 (OVC II, altitude up to 5000m ) IEC/EN 62368-1 (OVC II, altitude up to 5000m )			
SAFETY EXTRA-LOW VOLTAGE(SELV)		IEC/EN 61558-2-16 (SELV ) IEC/EN 62368-1 (SELV / ES1 )			
WITHSTAND VOLTAGE		I/P-O/P: 4KVac I/P-FG: 2KVac O/P-FG: 1.5KVac O/P-DC OK: 0.5KVac			
ISOLATION RESISTANCE		I/P-O/P, I/P-FG, O/P-FG: 100M Ohms/500Vdc/25℃ / 70%RH			
EMC EMISSION	Parameter		Standard		Test Level / Note
	Conducted		BS EN/EN55032 (CISPR32) / BS EN/EN61204-3 / CNS15936 / KS C 9832		Class B
	Radiated		BS EN/EN55032 (CISPR32) / BS EN/EN61204-3 / CNS15936 / KS C 9832		Class B
	Harmonic Current		BS EN/EN61000-3-2		Class A
	Voltage Flicker		BS EN/EN61000-3-3		-----
EMC IMMUNITY	BS EN/EN55035, BS EN/EN61204-3, BS EN/EN61000-6-2(BS EN/EN50082-2), KS C 9835				
	Parameter		Standard		Test Level / Note
	ESD		BS EN/EN61000-4-2		Level 3, 8KV air ; Level 2, 4KV contact; criteria A
	Radiated		BS EN/EN61000-4-3		Level 3, 10V/m ; criteria A
	EFT / Burst		BS EN/EN61000-4-4		Level 3, 2KV ; criteria A
	Surge		BS EN/EN61000-4-5		Level 4, 2KV/Line-Line ;Level 4, 4KV/Line-Line-Chassis ;criteria A
	Conducted		BS EN/EN61000-4-6		Level 3, 10V ; criteria A
	Magnetic Field		BS EN/EN61000-4-8		Level 4, 30A/m ; criteria A
OTHERS					
MTBF		2425.7K hrs min. Telcordia SR-332 (Bellcore) ; 533.7K hrs min. MIL-HDBK-217F (25℃)			
DIMENSION		30*125.2*116mm (W*H*D)			
PACKING		465g; 24pcs/12.15Kg/1.16CUFT			
NOTE					
<div>1. All parameters NOT specially mentioned are measured at 230Vac input, rated load and 25℃ of ambient temperature.</div> <div>2. Ripple &amp; noise are measured at 20MHz of bandwidth by using a 12" twisted pair-wire terminated with a 0.1 μ F &amp; 47 μ F parallel capacitor.</div> <div>3. Tolerance : includes set up tolerance, line regulation and load regulation.</div> <div>4. The ambient temperature derating of 3.5℃/1000m with fanless models and of 5℃/1000m with fan models for operating altitude higher than 2000m(6500ft).</div> <div>5. Installation clearances : 40mm on top, 20mm on the bottom, 5mm on the left and right side are recommended when loaded permanently with full power. In case the adjacent device is a heat source, 15mm clearance is recommended.</div> <div>6. The power supply is considered a component which will be installed into a final equipment. The final equipment must be re-confirmed that it still meets EMC directives. (as available on <a href="https://www.meanwell.com/Upload/PDF/EMI_statement_en.pdf">https://www.meanwell.com/Upload/PDF/EMI_statement_en.pdf</a> )</div> <div>7. The Regulatory Compliance Mark (RCM) is applied on a voluntary basis. The equipment meets the relevant IEC or AS/NZS standards, or AS/NZS 3820 where applicable. The use of the RCM mark complies with AS/NZS 4417.1.</div> <div>8. Some factory or model may not have the BIS logo, please contact your MEAN WELL sales for more information.</div> <div>※ Product Liability Disclaimer : For detailed information, please refer to <a href="https://www.meanwell.com/serviceDisclaimer.aspx">https://www.meanwell.com/serviceDisclaimer.aspx</a></div>					

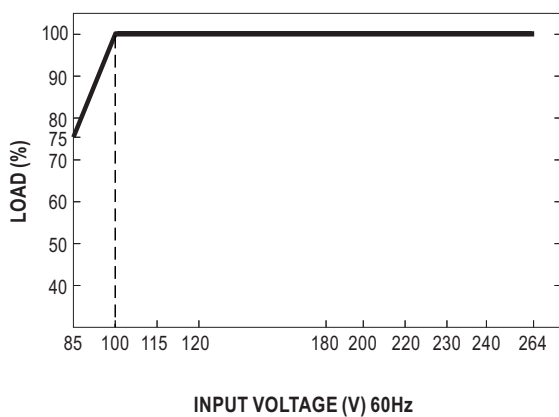
### ■ Block Diagram



### ■ Derating Curve



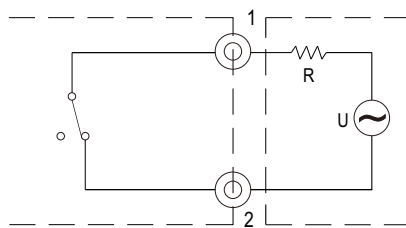
### ■ Static Characteristics



## Function Manual

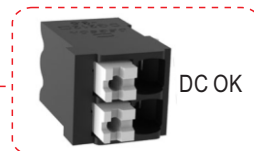
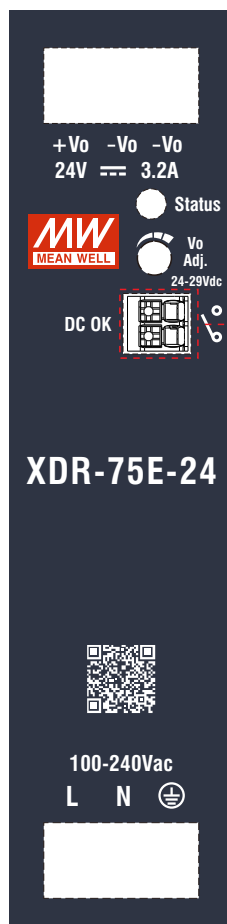
### 1.DC OK Relay Contact

Contact Close	PSU turns ON / DC OK.
Contact Open	PSU turns OFF / DC Fail.
Contact Ratings (max.)	30Vdc/1A, 30Vac/0.5A resistive load.



External voltage source (U) and resistor (R)  
(The max. Sink is 30Vdc/1A, 30Vac/0.5A)

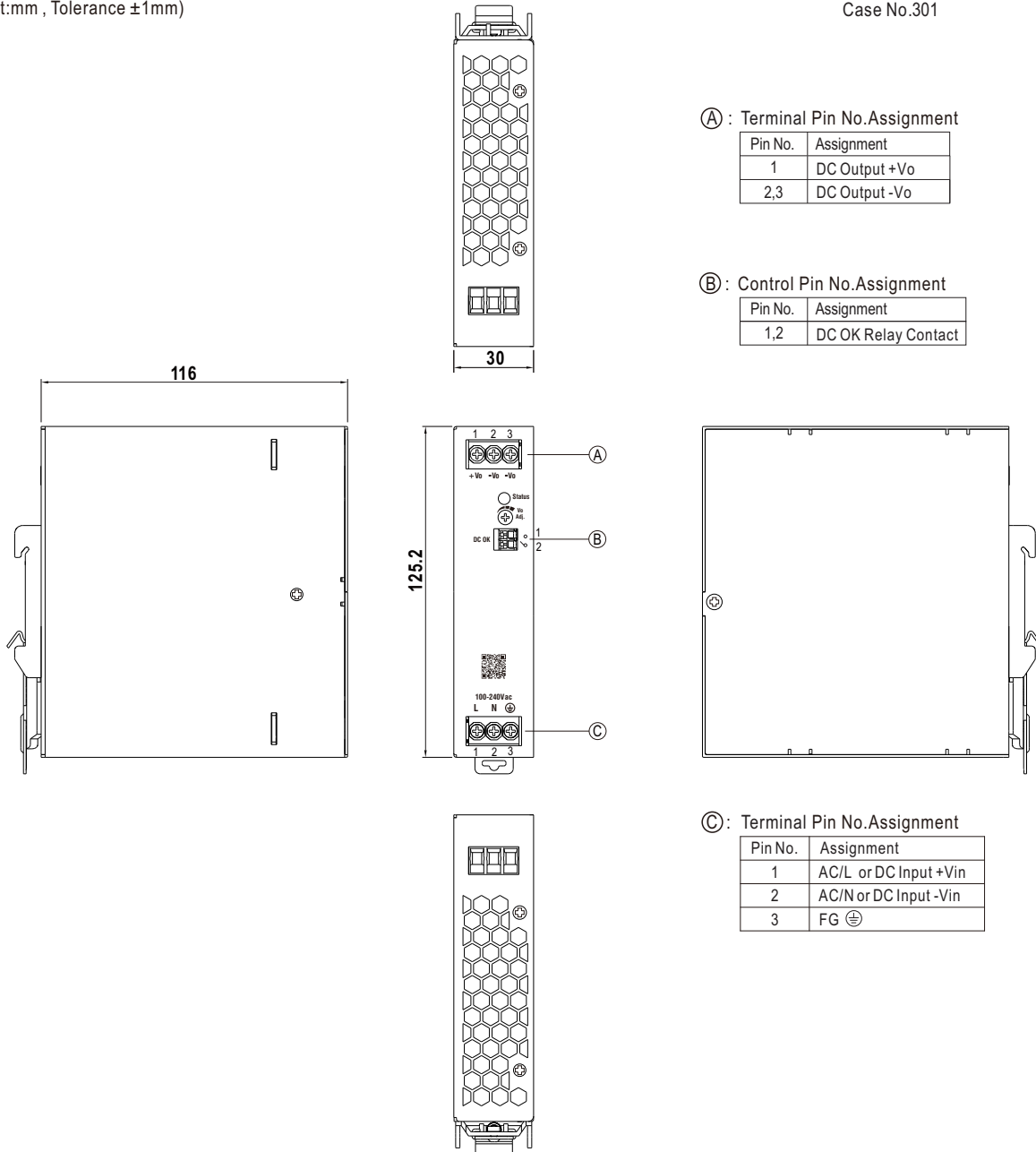
Internal circuit of DC\_OK, via relay contact



## Mechanical Specification

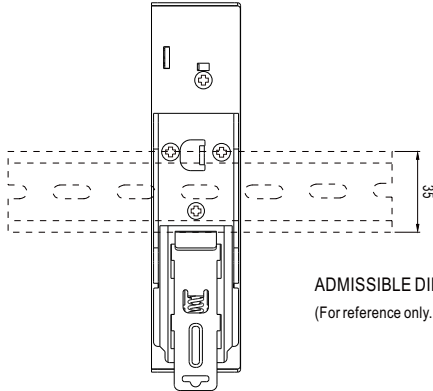
(Unit:mm , Tolerance  $\pm 1$ mm)

Case No.301



## Recommend Wiring

	AC Input T.B	DC Output T.B	Signal connector
Solid Wire	6mm <sup>2</sup> max.	6mm <sup>2</sup> max.	1.5mm <sup>2</sup> max.
A.W.G	18~10 AWG	18~10 AWG	24~16 AWG
Wire Stripping Length	7~8mm	7~8mm	8~9mm
Screw Terminal Torque	5 Lb-In	5 Lb-In	/

**■ Installation Instruction**

ADMISSIBLE DIN-RAIL: TS35/7.5 OR TS35/15  
(For reference only. Not included with unit.)

This series fits DIN rail TS35/7.5 or TS35/15.

For installation details, please refer to the Instruction manual.

**■ Installation Manual**

Please refer to : <http://www.meanwell.com/manual.html>