



Optional Installation Brackets



KC-3DR

DIN-Rail mounting for:

KC-300D, KC-300DM, KC-350, KC-351, KGC-300, KGC-310M-C, KGC-311, KGC-352



KC-4DR

DIN-Rail mounting for:

KGS-1260, KGS-1060, KGS-1064, KGS-0865, KGS-0840, KGS-810F-B, KGD-600-C, KSD-800, KSD-800M, KSD-541-HP, KFS-1640, KFS-0840, KFS-0540, KGC-460, KGC-261-DP, KGC-260, KGC-240, KCD-400, KSD-103-x, KSC-361, KFC-241, KFC-200-B, KGC-320, KSC-200, KSC-240, KPW-T2P25, KPW-T4SP, KPOE-200, KPW-RDP-7A/18A, KPW-10024-DF, KPW-10048-D/DF, KPW-DCT48-D, KPW-2024-D, KPW-1012-D, KPW-2012-D-E, KPW-D48T12/24



KCD-3PB

Panel mounting for:

KCD-300



KSD-6PB

Panel mounting for:

KGD-600-C, KSD-541, KSD-541-HP



KSD-8PB

Panel mounting for:

KGS-1060, KGS-0865, KGS-0840, KSD-800, KSD-800M, KFS-1640, KGC-460, KGC-261-DP, KPW-DCT48-D, KPW-10024-DF, KPW-10048-D/DF



PMB-241

Panel mounting for:

KFC-241



PMB-400

Panel mounting for:

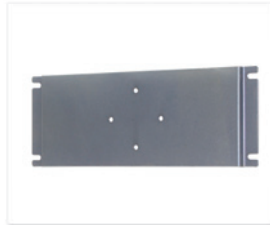
KCD-400, KSC-200, KSC-240, KSD-103-x



PMB-303

Panel mounting for:

KFC-200-B, KPW-T2P25



PMB-810

Panel mounting for:

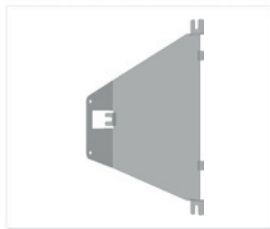
KGS-810F-B



PMB-0540

Panel mounting for:

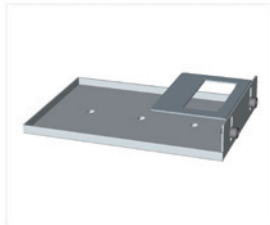
KFS-0840, KFS-0540, KGC-260, KGC-240, KPW-2012-D-E



PMB-1064

Panel mounting for:

KGS-1260, KGS-1064



WMK5

Wall mounting for:

KGD-600-C, KSD-541, KSD-541-HP, KGS-510F-D, KS-105F-B, KS-115FM-V, KS-117FM-V



WMB-0820

Wall mounting for:

KFS-2621, KGS-0820, KPOE-800, KPOW-800-HP



Katron Technologies Inc.
 15F-7, No. 79, Sec. 1, Hsin Tai Wu Rd.,
 Hsi-chih District, New Taipei City, Taiwan
 Tel: 886-2-2698-3878
 Fax: 886-2-2698-3873
 E-mail: kti@ktinet.com.tw
 URL: <http://www.ktinet.com.tw>

Trademarks: All brand names are trademarks or registered trademarks of their respective holders.
 This information is subject to change without prior notice.