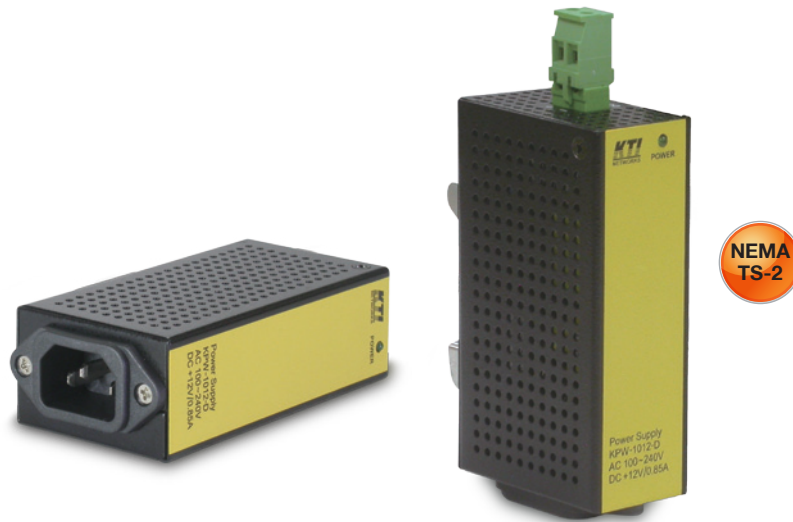




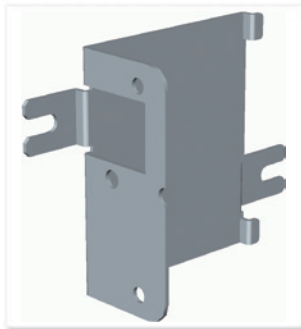
KPW-1012-D



DIN-Rail Mounting



Panel Mounting Bracket



Accessories



DIN-Rail AC-DC 12V/10W Power Supply

Key Features:

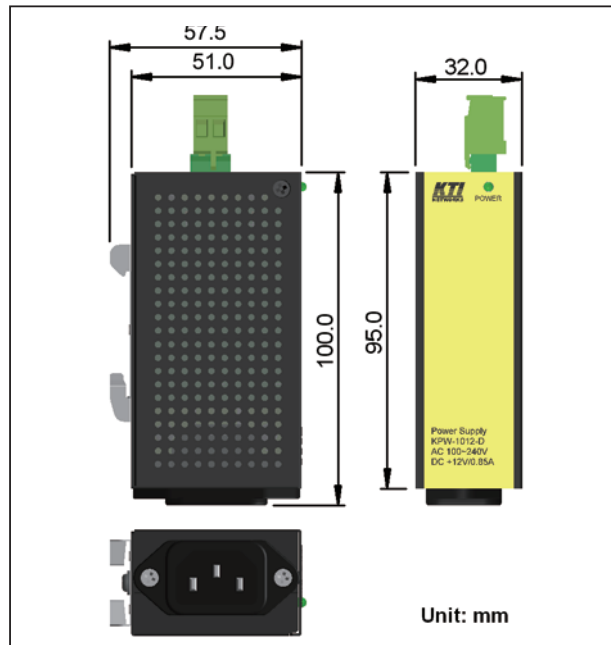
- Universal AC input/Full range
- Typical IEC320 AC socket for universal installation
- Dual types of DC output interfaces:
 - One industrial terminal block connector for industrial installations
 - Typical DC plug support for universal installation
- No load power consumption < 0.3W
- Protections: Short circuit/Over load/Over voltage
- UL60601-1/IEC60601-1/UL60950-1/IEC60950-1 safety approved internal Power Module
- TUV EN60950-1 certified
- High operating temperature range

Specifications:

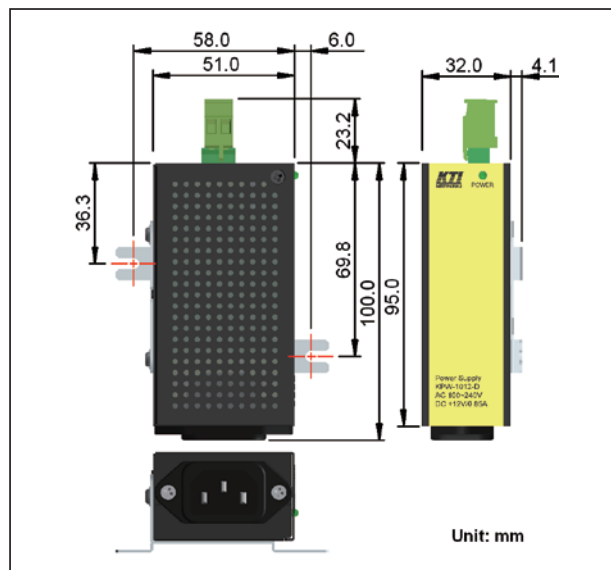
AC Input voltage	100 ~ 240VAC
DC Output voltage	+12V (+/-1%), 0.85A max.
Output Rated Power	10.2W
Efficiency	83% (Typ.)
Input connectors	IEC320 C14 socket
Output connectors	Terminal block 2P: Vout+/Vout- DC plug cable for Device's DC jack interface
LED	Power status
Mounting Support	DIN-Rail, Wall, Panel, Desktop
Protection	Short circuit, Over load, Over voltage
Environment	Operating Temperature: -40°C ~ 70°C Storage Temperature: -40°C ~ 85°C Relative Humidity: 10% ~ 90% non-condensing
Dimensions	32 x 51 x 95 mm (WxDxH)
Internal Power Module	UL60601-1, IEC60601-1, UL60950-1, IEC60950-1, certification
MTBF	136K Hours
Approval	FCC Class A, CE mark Class A LVD, TUV EN60950-1 safety, VCCI Class A NEMA TS2-2003 Environment tested

EMI EMS Safety Environmental Tests:

Test	Standard	Specifications
FCC/EMI	FCC Rule Part 15	Class A
CE/EMC/EMI	EN55022, CISPR 22	Class A
VCCI	VCCI V-3 VCCI V-4	Class A
CE/EMC/Harmonic	EN 61000-3-2	< 75 W
CE/EMC/FFF	EN 61000-3-3	Clause 5
CE/EMC/EMS	EN 55024	
ESD Test	IEC 61000-4-2	Contact: 4k Air: 8k
RS Test	IEC 61000-4-3	Strength: 3V/m
EFT/BURST	IEC 61000-4-4	Line-Line: 1k Line-Ground: 1k
Surge Immunity	IEC 61000-4-5	Line-Line: 1k Line-Ground: 2k
CS Test	IEC 61000-4-6	Level 2
Magnetic Field Imm.	IEC 61000-4-8	50Hz 1A/m
Voltage Dips Imm.	IEC 61000-4-11	Interrupt 95%: C Dips 95%: B
Safety	TUV 60950-1	
Dielectric Voltage	IEEE 802.3	TP, 1500VAC/10mA
Insulation Resistance	IEEE 802.3	TP, 500VDC/10Mohm
Cold Test	IEC 60068-2-1 Ad	-40°C, 24hrs
Dry Heat Test	IEC 60068-2-2 Bd	+70°C, 40%RH, 72hrs
Damp Heat Test	IEC 60068-2-3 Ca	+70°C, 90%RH, 72hrs
NEMA TS2 Vibration test	NEMA TS2-2003 Proc. 2.2.8	5-30Hz, 0.5g XYZ, 1hr/axis
NEMA TS2 Shock test	NEMA TS2-2003 Proc. 2.2.9	10G
NEMA TS2 Environment test	NEMA TS2-2003 Proc. 2.2.7	Temp: -34°C ~ 74°C Humid: 0%~90%



DIN-Rail Dimension



Panel Dimension



Katron Technologies Inc.
 15F-7, No. 79, Sec. 1, Hsin Tai Wu Rd.,
 Hsi-chih District, New Taipei City, Taiwan
 Tel: 886-2-2698-3878
 Fax: 886-2-2698-3873
 E-mail: kti@ktinet.com.tw
 URL: http://www.ktinet.com.tw

Trademarks: All brand names are trademarks or registered trademarks of their respective holders. This information is subject to change without prior notice.