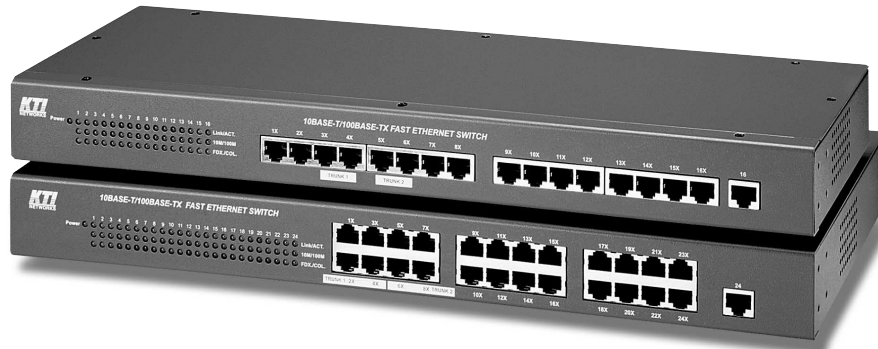


KS-516, KS-524



16/24-Port Workgroup Switches

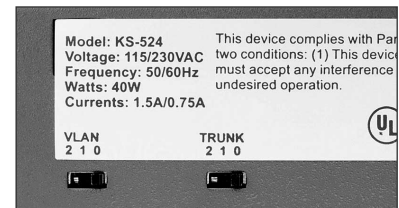
The KS-516 and KS-524 Switches are new members to the KTI switch family that provide 16 and 24 10/100Mbps auto-negotiation switched ports for workgroup applications. Each port can bring the connection speed up to 20Mbps or 200Mbps by auto-negotiating the network speed and duplex type with the other end of the link.

Both KS-516 and KS-524 feature port-based VLAN which gives the administrator a powerful tool to control unnecessary broadcast traffic, to segment the network, and to enhance network security. The proprietary trunking support of KS-516 and KS-524 eliminate the bottleneck exists between switch to switch connection by increasing the bandwidth up to 2 times faster than the normal uplink.

KS-516 and KS-524 are designed to improve the network traffic congestion in traditional shared media network and to offer a cost effective and flexible solution to most workgroups where 10M to 100M migration, 10M and 100M integration, and higher bandwidth are needed.

Key Features:

- ◆ Comply with IEEE802.3 10Base-T and IEEE802.3u 100Base-TX standards
- ◆ Provide 16/24 10/100Mbps auto-negotiation switched ports
- ◆ Provide one additional RJ-45 for easy uplink connection
- ◆ Each port supports both 10/100Mbps speed and full/half duplex auto-negotiation
- ◆ Store-and-forward architecture
- ◆ Non-blocking switching
- ◆ Wire speed filtering and forwarding rate
- ◆ Support full-duplex flow control (IEEE 802.3x)
- ◆ Back-pressure flow control in half-duplex mode
- ◆ Three pre-set modes of trunking configurations selectable via DIP switches that provide aggregate bandwidth transmission with other KS-516 or KS-524
- ◆ Three pre-set modes of port-based VLAN configurations selectable via DIP switches for reducing broadcast storm and for increasing network security
- ◆ 19" rack mountable



Both KS-516 and KS-524 support Trunking and Port-based VLAN features via convenient DIP switch settings on the rear panel.

Trunking function provides up to 400Mbps aggregate bandwidth for the switch to switch connection.

Port-based VLAN function is used to virtually divide all switched ports into groups for the purpose of security and performance.

Specifications:

16/24-Port 10/100 Workgroup Switches:

Model	KS-516	KS-524
10/100 Port	16	24
Standard	IEEE 802.3 10Base-T Ethernet, IEEE 802.3u 100Base-TX Fast Ethernet, IEEE 802.3x Flow Control in full-duplex	
MAC Address	1K MAC addresses per unit	
Filtering Rate	14,880 pps for Ethernet, 148,800 pps for Fast Ethernet	
Forwarding Rate	14,880 pps for Ethernet, 148,800 pps for Fast Ethernet	
RAM Buffer	2MB	3MB
Connector	Shielded RJ-45	
Cable	10Base-T: 100Base-TX:	Cat. 3, 4, or 5 UTP cable (100m max.) Cat. 5 UTP cable (100m max.)
LEDs	Power status for each unit Link/Activity, 10/100, Duplex/Collision status for each port	
Environment	Temperature: Relative Humidity:	0° to 40°C 10% to 90% non-condensing
Dimensions	440 x 152 x 44.5mm (17.32 x 7.87 x 1.75inch)	440 x 200 x 44.5mm (17.32 x 5.98 x 1.75inch)
Power	115-230 VAC, 50/60 Hz, 35W	115-230 VAC, 50/60 Hz, 40W



FCC Part 15, Class A
CISPR 22 Class A

Trunking Settings:

Mode	KS-516	KS-524
0: Disable Trunking	Disable Trunking	Disable Trunking
1: Enable Trunk1	Enable Port 3, 4	Enable Port 2, 4
2: Enable Trunk1 & Trunk2	Enable Port 3, 4, 5, 6	Enable Port 2, 4, 6, 8

VLAN Settings:

Mode	KS-516	KS-524
0: Disable	Disable VLAN	Disable VLAN
1: Enable Type1 VLAN	Enable Port 1-8, 9-16	Enable Port 1-16, 17-24
2: Enable Type2 VLAN	Enable Port 1-9, 8-16	Enable Port 1-16, 13-24

Ordering Information:

KS-516: 16-Port 10/100 Workgroup Switch	KS-524: 24-Port 10/100 Workgroup Switch
---	---